

About DEET

DEET (N, N-diethyl-meta—toluamide) is the most commonly used insect repellent applied to the human body, yet it is highly controversial. Many scientists have raised concerns about DEET's toxic properties when used alone and in combination with other chemicals. DEET is quickly absorbed through the skin and has caused effects ranging from large blisters, numbness, and mood disturbances to brain damage in children, three of whom died in the last 40 years.

The Dos and Don'ts of DEET

- ✓ Do not allow young children to apply this product.
- ✓ Do not apply near children's hands or faces.
- ✓ Apply only enough to cover exposed skin and/or clothing.
- ✓ Do not apply over cuts, wounds or irritated skin.
- ✓ Thoroughly wash all treated skin with soap and water after returning indoors.
- ✓ Wash treated clothes before wearing again; and
- ✓ Do not spray aerosol forms inside. (EPA, 1998)

Contact A CCE Office Near You

225A Main St., Farmingdale, NY 11735
Tel: 516-390-7150 Fax: 516-390-7160

199 Main St., Suite 319, White Plains, NY 10601
Tel: 914-997-0946 Fax: 914-997-0983

170 Washington Ave., 3rd Floor, Albany, NY 12210
Tel: 518-434-8171 Fax: 518-434-8172

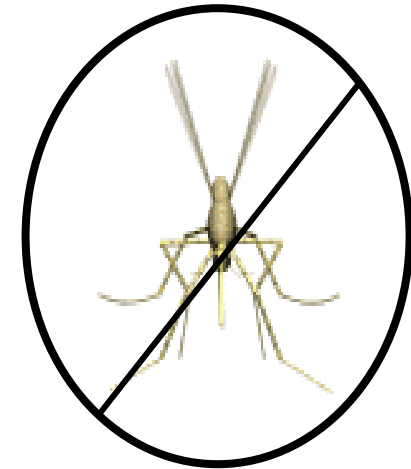
3144 Main St., Buffalo, NY 14214
Tel: 716-831-3206 Fax: 716-831-3207

813 East Genesee St., Syracuse, NY 13210
Tel: 315-472-1339 Fax: 315-472-1179

www.citizenscampaign.org



FOR MOSQUITO PROTECTION...



USE PREVENTION!

In the past, the widespread reaction to mosquitoes and other nuisance pests was to spray and apply chemical pesticides and repellents. More recently, scientists have come to learn the damaging effects these chemicals have on human health and our ecosystem.